



Illinois Courts Unified Data Collection and Online Reporting

Harnessing the Power of Data-Driven Justice for DEI and Behavioral Health Change Management

Law and Knowledge by Charles J. Mulligan
Photograph by Randy von Liski



Monthly Aggregate Stats

Monthly Datasets by Year

Data Dictionaries & Instructions

2011 Data

2012 Data

2013 Data

2014 Data

2015 Data

2017 Data

2018 Data

2019 Data

2020 Data

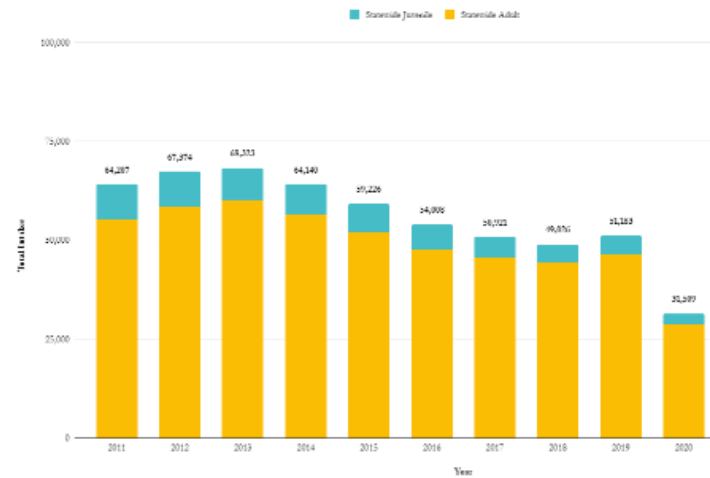
2021 Data

2023 Data (WIP)

Statewide Data Trends

* Note the difference in scale between adult and juvenile to allow for visualization of juvenile data.

Statewide Adult and Juvenile: Intake to Active Caseload by Year



From This . . .

Administrative Office of Illinois Courts

ANNUAL REPORT OF THE ILLINOIS COURTS

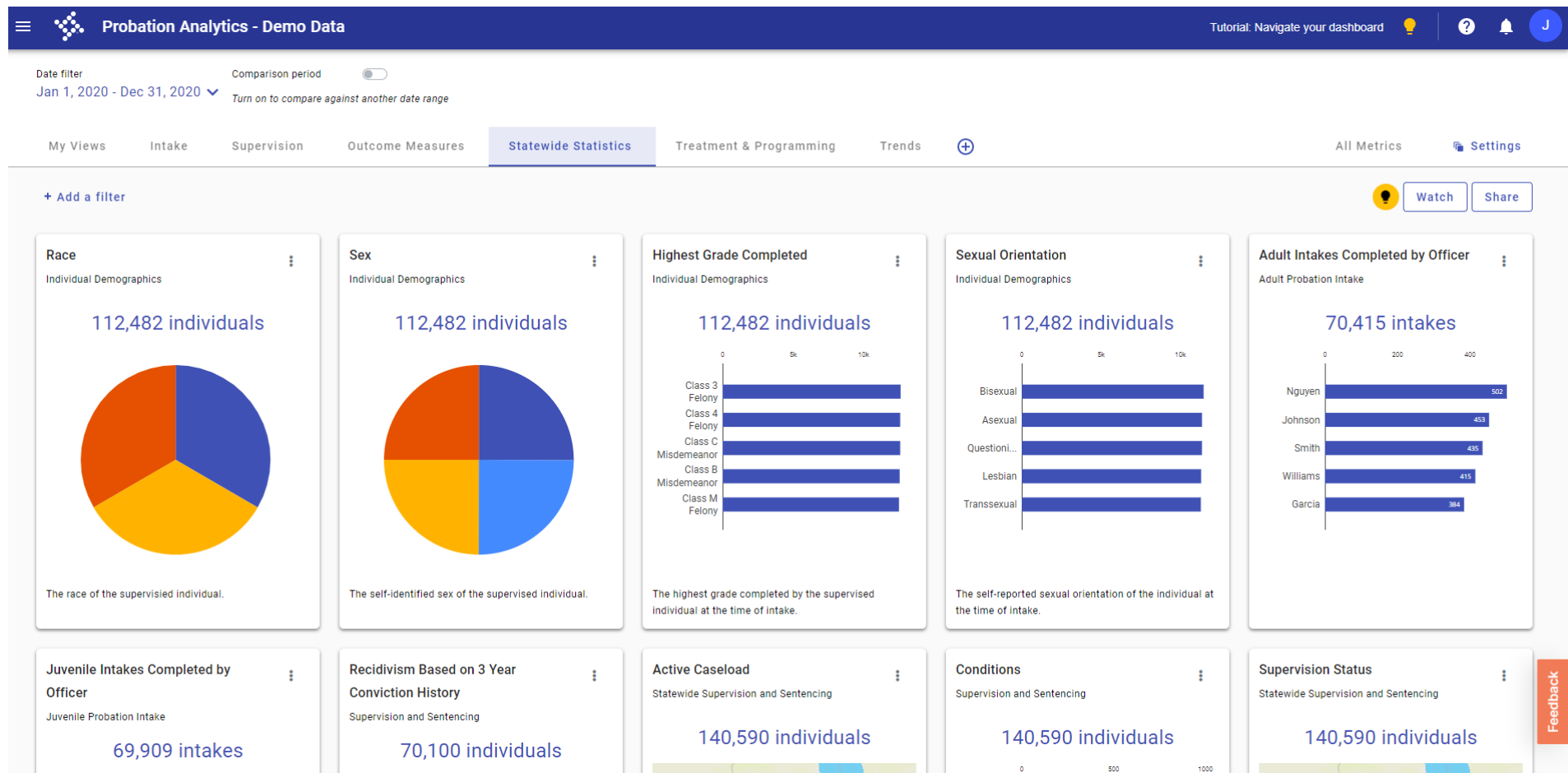
Administrative Summary 2002

Forgotten Books

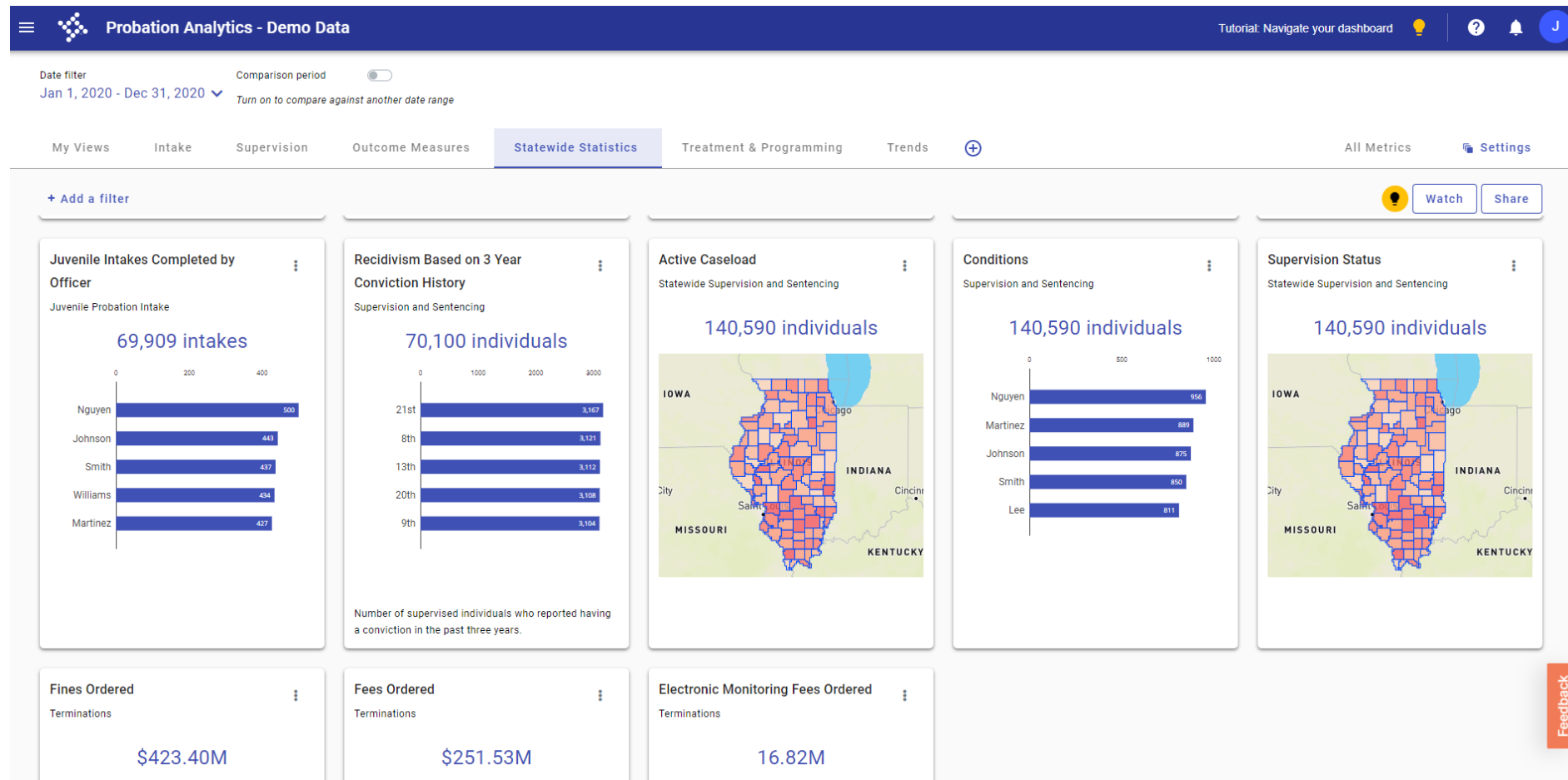
ILLINOIS COURTS

Audi Alteram Partem

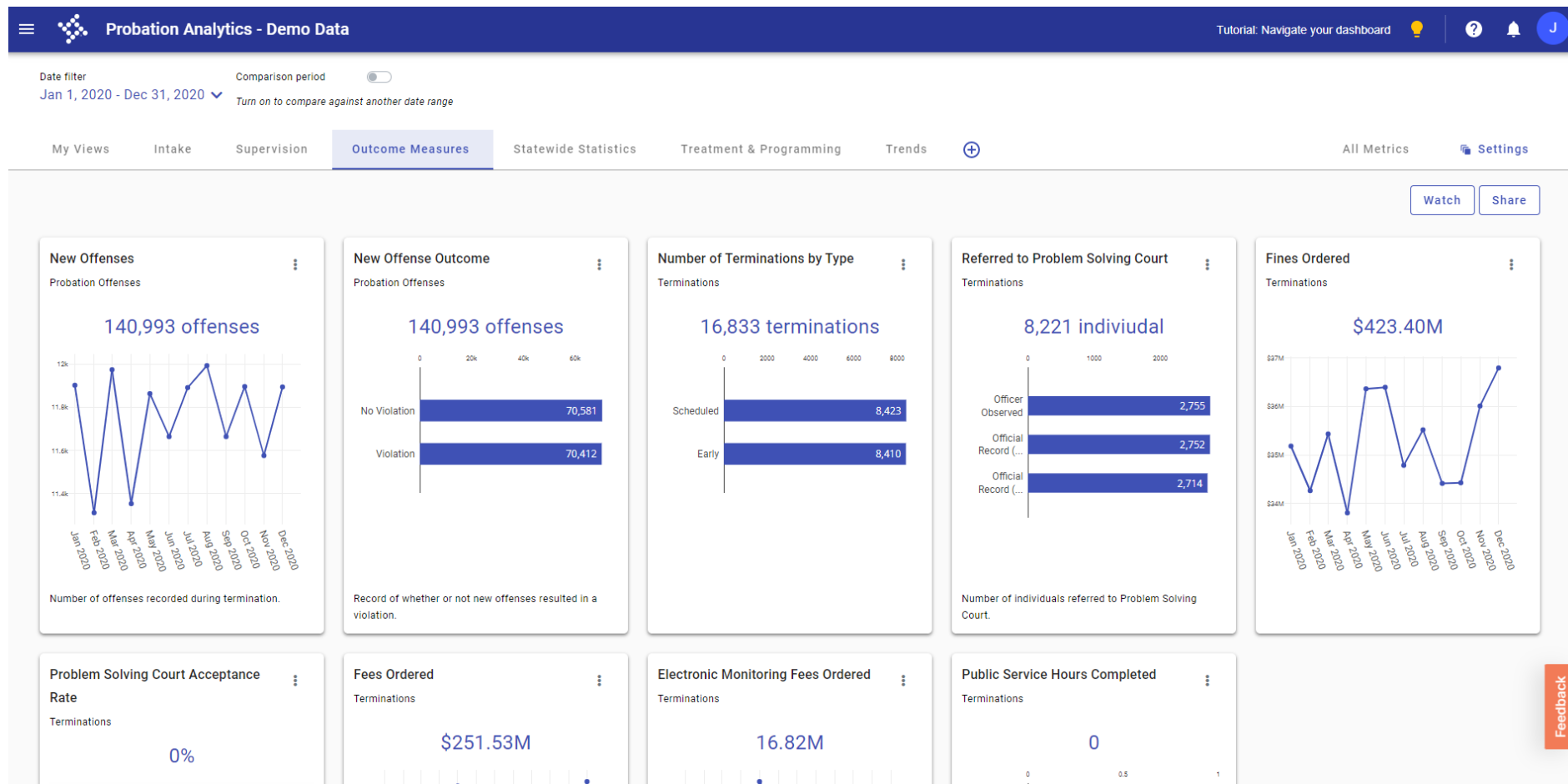
To This . . .



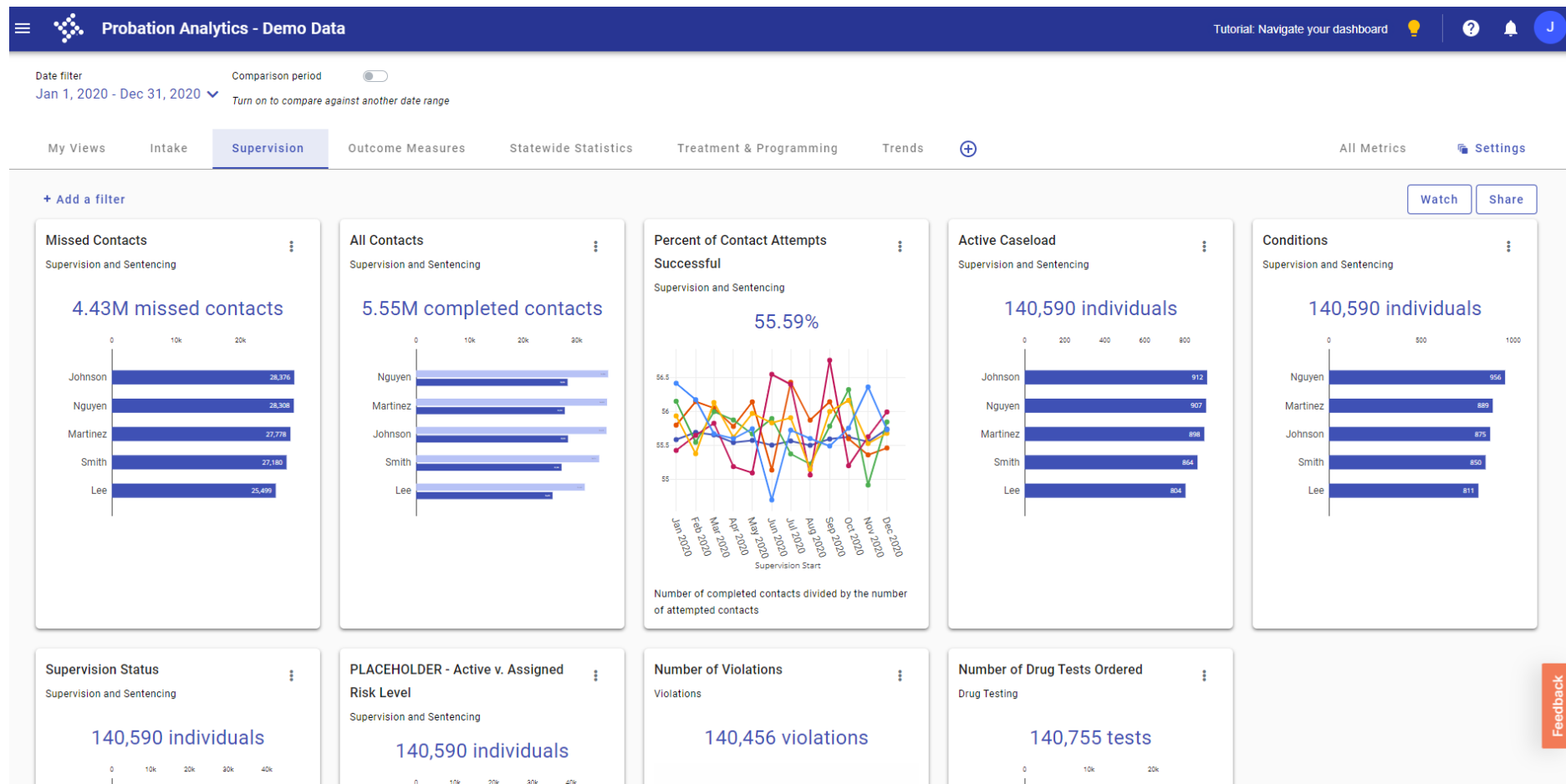
To This . . .



To This . . .



To This . . .



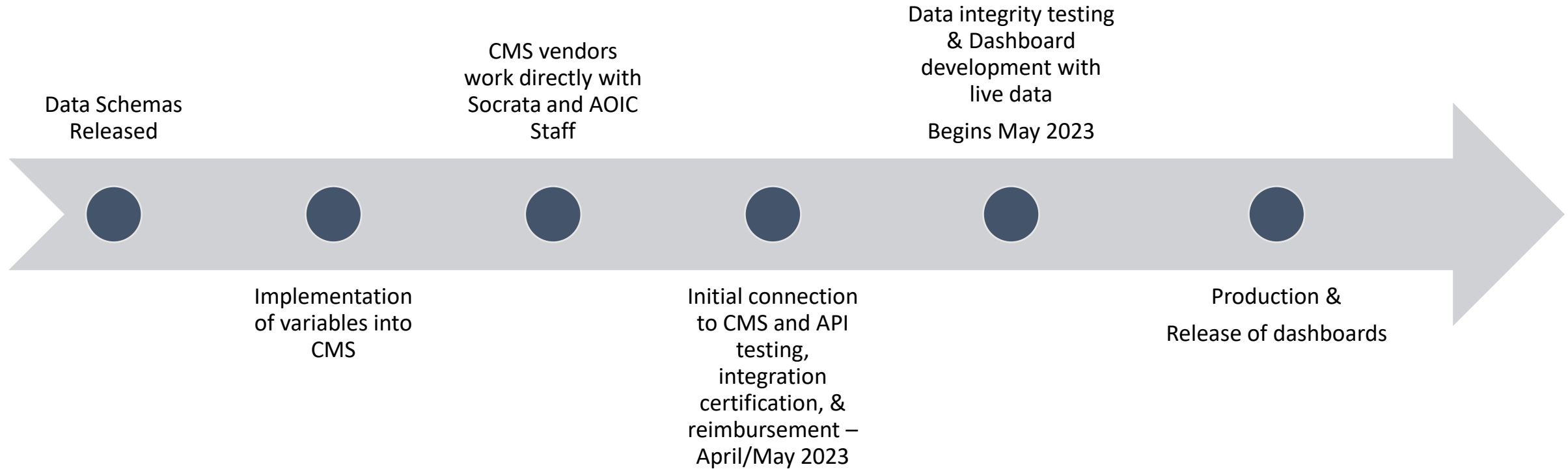
Schema Reporting Programs

Probation	Clerk Data:
Problem-Solving Courts	Annual Statistical Reports (Reports A-L)
	SRL Statistical Reporting (Report K)
	Financial Reports (Report J)
	Model Time Standards (Reports M & N)
	Criminal Traffic and Assessment Act (CTAA)
	Automated Disposition Reporting (ADR)
	Juvenile Data (Report O)
Pretrial Court Data - Pretrial Fairness Act	Pretrial Court Data - Pretrial Fairness Act

Data Collection and Reporting with Socrata

Single End Point Integration and Data Transfer	Unified, comprehensive framework of data elements
	Direct, daily (or event based) transfer for all reporting programs
Custom Dashboards for Each Jurisdiction	Statewide Summary
	Jurisdictional access for case-level data
	No cost to counties for licenses

Process and Timeline



Socrata Reporting Overview, Goals, & Benefits

Adequate Demographic, Geographic, and Socioeconomic Data

Standardization, Consistency, and Current Data

Informed Court Management Decisions

Increased Court Transparency

Online Reporting System (Free) to Departments, Judges, and Court Partners

ARI Reports

Resources

Probation & PSC Webpages

- [New Data Elements Q&A](#) (timeline and history)
- [FAQs | Directions & Definitions](#) (directions and guidelines)

[Tyler Certification Project Page](#)

- One on One Meetings – Tyler and CMS Vendor
- Dedicated certification Help: data-certification@tylertech.com



AOIC Project Team: Analytics@illinoiscourts.gov

Dr. Jennifer Ryterski
jryterski@illinoiscourts.gov
217-208-3232

